

PT DOME SERIES

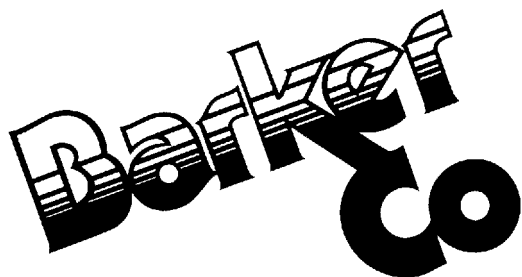


F E A T U R E S :

The PT Dome Series combines service and self-service applications into one sleek merchandiser. The dome, available in 16" or 20 1/4" heights, can be hot, refrigerated or dry. The easy open, front lift glass is available in non-glare curved or flat glass. Standard rear load doors make merchandising and servicing easy. Combine hot and cold for one full service merchandiser or choose one application for a continuous lineup.

The lower section has a 16" metal shelf and bottom deck to put self-service product within easy reach. Refrigerated rear storage is also available. A long list of options allows for a custom design to fit any store décor. This merchandiser is equally at home in the deli, bakery, produce, or fresh seafood and meat departments.

Barker Company
703 Franklin Street
Post Office Box 478
Keosauqua, Iowa 52565
Tel: 319-293-3777
Fax: 319-293-3776
www.barkercompany.com



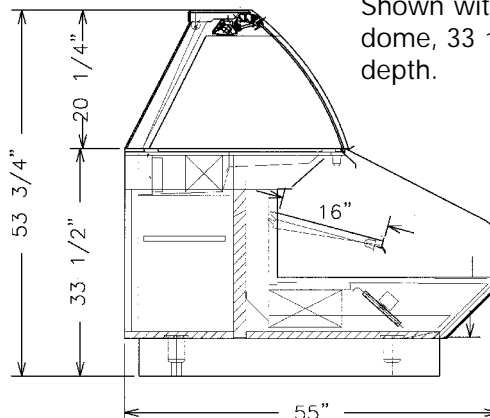
PT DOME SERIES

Standard Features

- Choice of standard grade laminate exterior
- Painted metal interior
- Straight, front lift regular glare glass
- Corian top and counter
- One row 16" metal shelf or two step riser
- Dry rear storage for remote cases only
- Reflective or clear, rear load doors

Options

- Custom lengths
- 16" or 20 1/4" dome heights
- Hot, refrigerated or dry dome
- Pass through or prep area to replace dome
- Non-glare, flat glass
- Non-glare, curved glass
- Regular glare, curved glass
- Mirrored, laminated, glass, or thermal glass ends
- Painted metal exterior
- Brass trim
- Stainless steel interior
- Cart bumper
- Color accent band
- Additional shelving and optional shelving sizes
- Flip up work top
- Refrigerated rear storage
- Hand sink
- Condiment pans and lids



Shown with optional 20 1/4" dome, 33 1/2" base, and 55" depth.

Dimensions

Width

PTD-4	49 1/8"	PTD-8	96 3/4"
PTD-5	61 1/4"	PTD-10	120 1/2"
PTD-6	72 7/8"	PTD-12	144 3/8"

Mirrored ends add 1 7/16" each end to overall width.

Glass and Laminate ends add 1 3/8" each end to overall width.

Thermal glass dividers add 3/4" each end to overall width.

Depth

Chose between 51 1/2" or 55" depth.

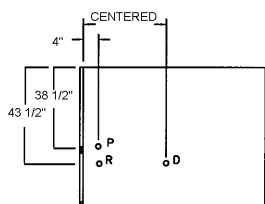
Base Height

Chose between lower base heights of 33 1/2" or 38".

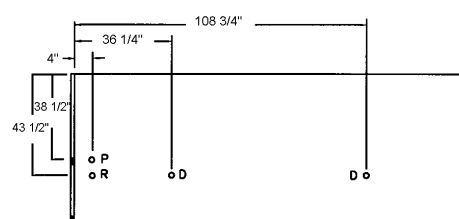
Dome Height

Dome heights are 16" or 20 1/4". Add desired dome height to lower section for overall height.

Mechanical Information (same for 51" and 55" depth)



PTD-4, PTD-6, PTD-8, PTD-10



PTD-12

Measurements from customer left. P=Power, R=Refrigeration, D=Drain

Technical Data

Off Cycle Defrost System

Refrigerated Dome BTU/Lin.Ft: 200

Remote: All remote units require 120-1-60.

Self-Contained: 4' and 6' are 120-1-60.
8',10', and 12' units are 208-1-60.

Hot Dome: All units require 208-3-60.

All units are not cord connected.

Self-Contained Amperage

	4 ft	5 ft	6 ft	8 ft	10 ft	12 ft
PT Dome Base Unit	18.5A	22.2A	18.34A	18.9A	22.4A	23.1A
Refrigerated Dome	1.3A	1.3A	1.5A	2.4A	2.4A	3.4A
Remote Amperage	4 ft	5 ft	6 ft	8 ft	10 ft	12 ft
PT Dome Base Unit	1.6A	2.0A	2.6A	3.1A	3.2A	3.9A
Hot Dome Amperage	4 ft	5 ft	6 ft	8 ft	10 ft	12 ft
	5.8A	6.8A	9.8A	12.6A	14.8A	18.4A

Evap temp: 18°

PT Base BTU/Lin.Ft: 945



Barker Company

703 Franklin Street

Post Office Box 478

Keosauqua, Iowa 52565

Tel: 319-293-3777

Fax: 319-293-3776

www.barkercompany.com